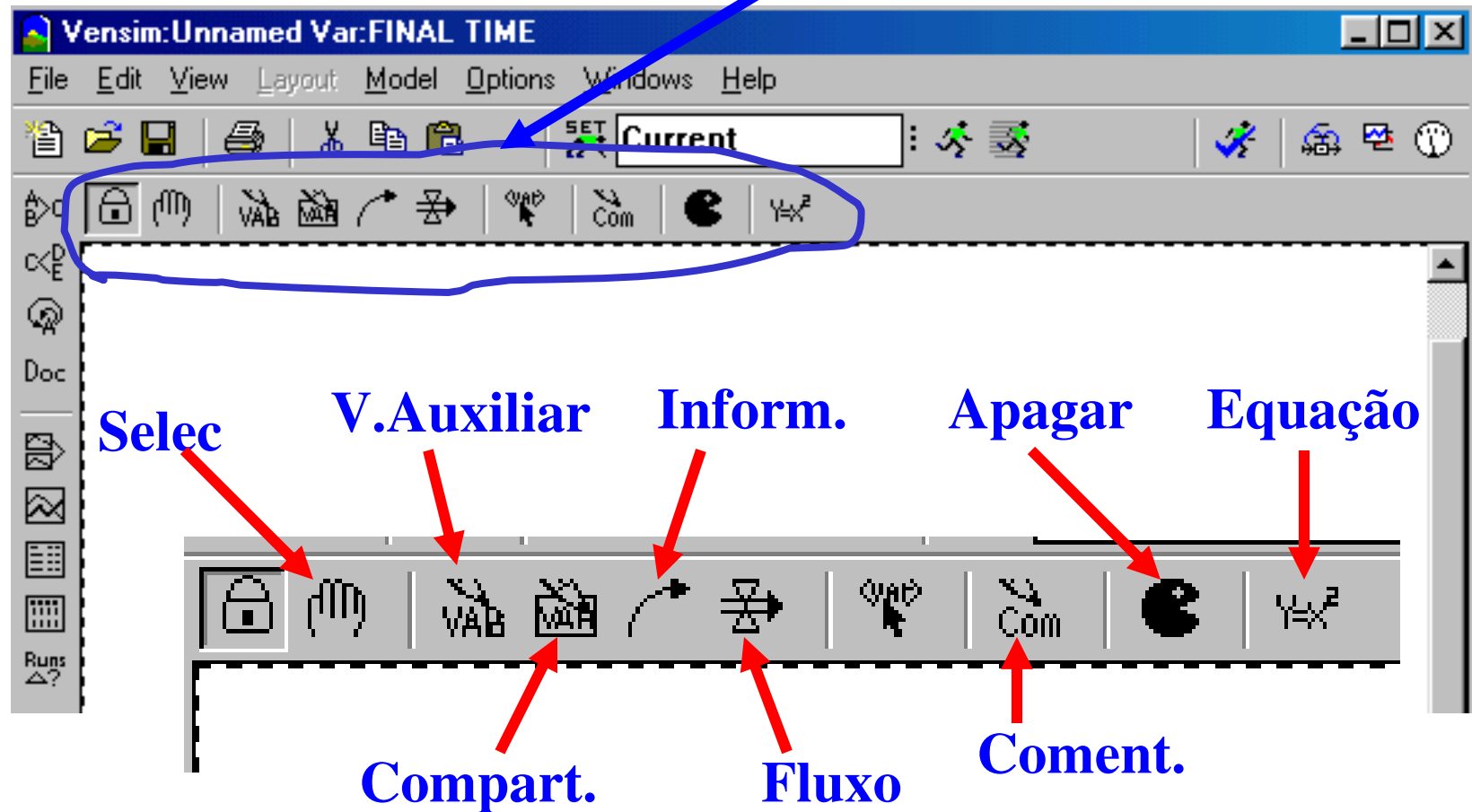
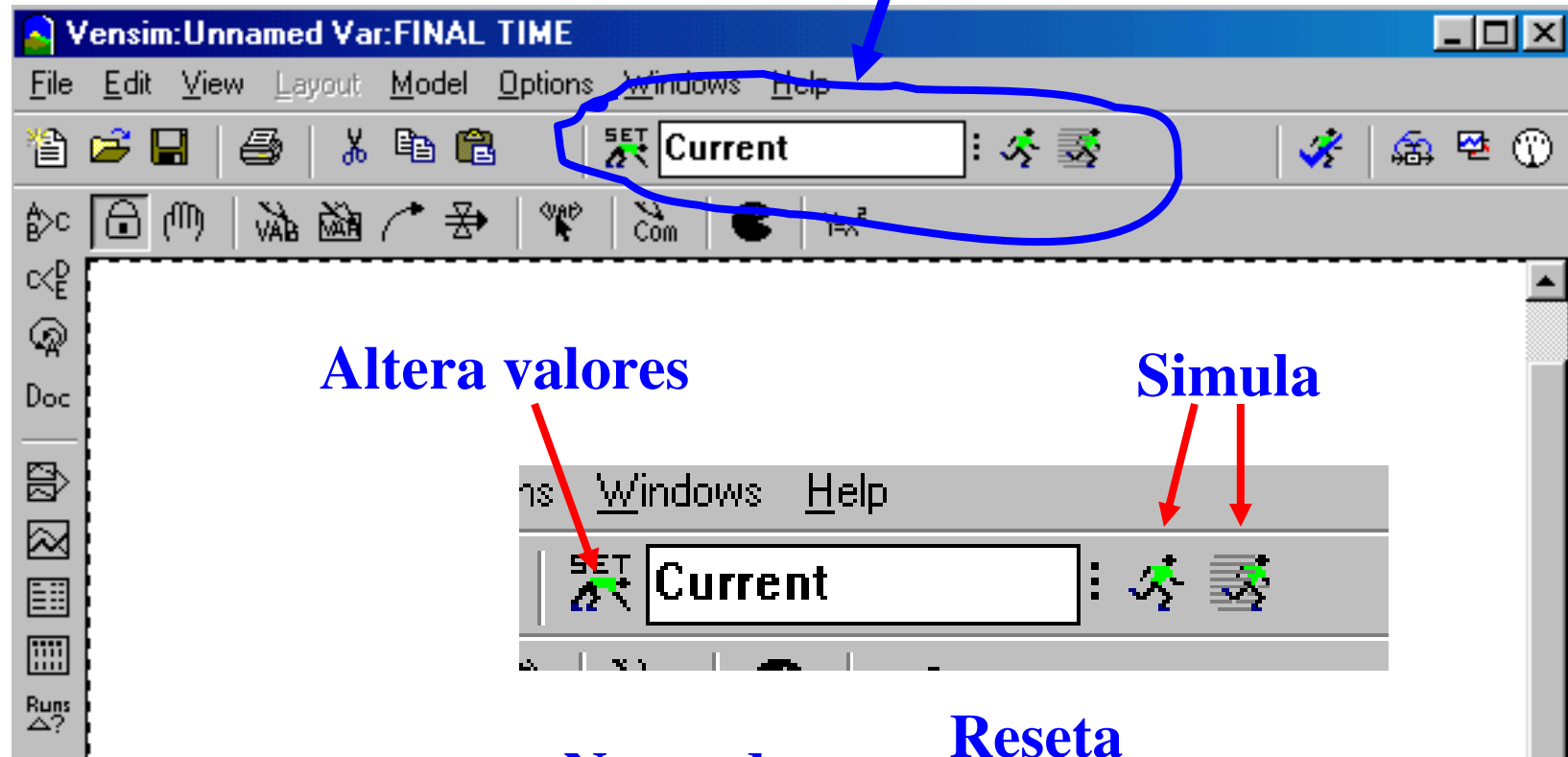


# VENSIM

## Construção do modelo



**Simulação**



**Altera valores**

**Simula**

**Para simulação**

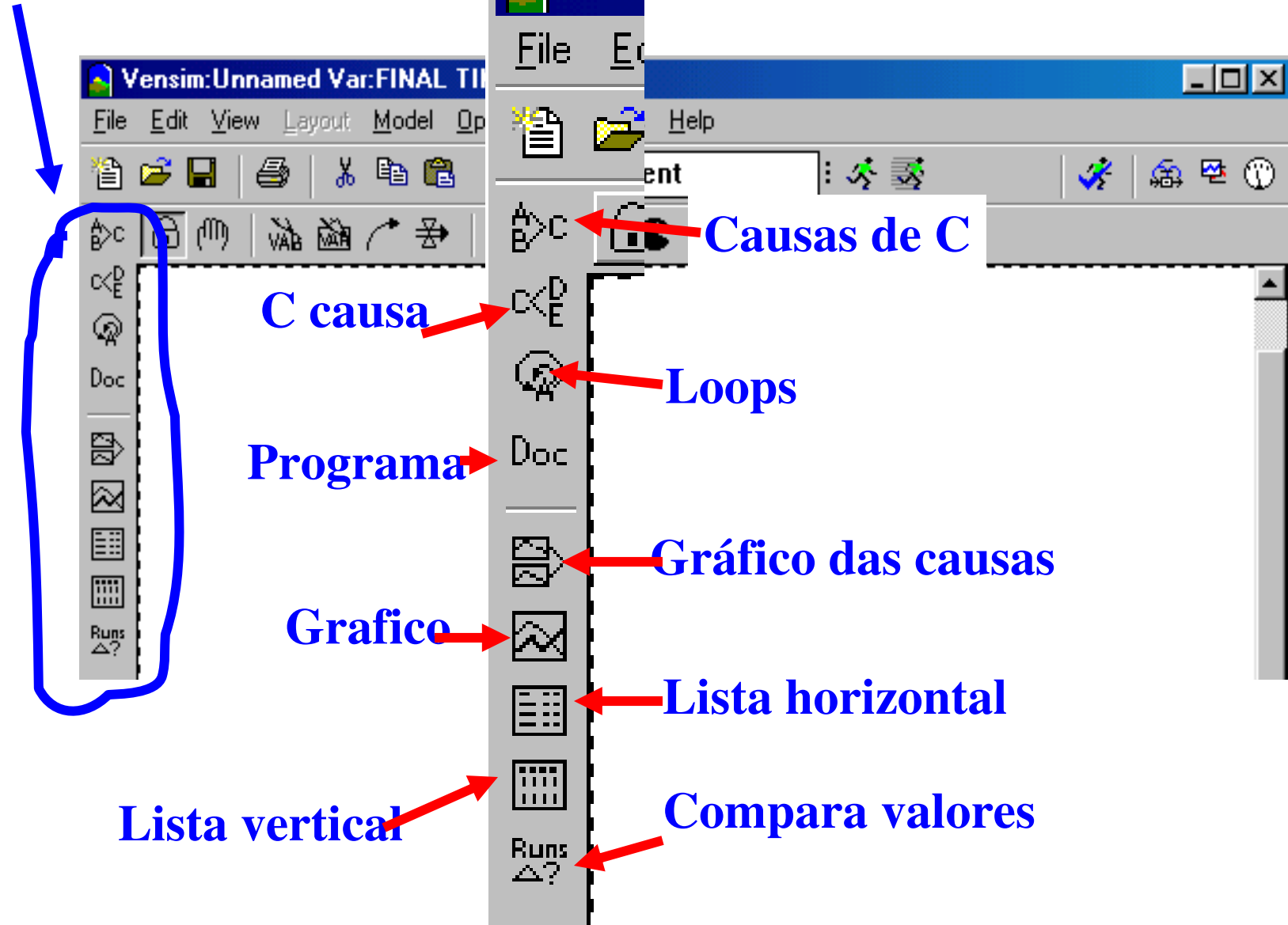
**Nome do  
arquivo**

**Reseta  
variavel**

**Reseta  
todas**



**Analise**



# Formatação do Modelo



## Fluxos e V. auxiliares

**Editing equation for - Juro mensal**

Juro mensal

= Saldo\*Taxa de juro

Type

Auxiliary

Normal

☐ Supplementary

Help

Units: R\$/Month

Comment:

Minimum Value  Maximum Value  Increment

Errors: Equation OK

OK Check Syntax Check Model Delete Variable Cancel

Variables Functions More

Choose Initial Variable...

Saldo  
Taxa de juro

# Compartimento

**Editing equation for - Saldo**

Saldo

=

INTEG ( Aplicações mensais+Juro mensal-Saida

Initial Value Saldo inicial

Type

Level

Undo

7 8 9 +

{()}

4 5 6 -

1 2 3 \*

0 E . /

( ) ^

Help

Supplementary

Units: R\$

Comment:

Minimum Value

Maximum Value

Increment

Errors: Equation OK

Variables Functions More

Choose Initial Variable...

Saldo

Aplicações mensais

Juro mensal

Saida

OK Check Syntax Check Model Delete Variable Cancel

# Constantes

**Editing equation for - Taxa de juro**

Taxa de juro

= 0.1

Type: Constant

☐ Supplementary

Help

Units: 1/Month

Comment:

Minimum Value: 0 Maximum Value: 1 Increment: 0.01

Errors: Equation OK

OK Check Syntax Check Model Delete Variable Cancel

Variables Functions More

Choose Initial Variable...

{()} 7 8 9 + 4 5 6 - 1 2 3 \* 0 E . / ( ) ^



## Model Settings - use Info/Sketch to set initial causes

Time Bounds

Info/Password

Sketch Appearance

Units Equiv

Time Bounds for Model

INITIAL TIME =

0

**Tempo inicial**

FINAL TIME =

100

**Tempo final**

TIME STEP =

0.125

**Delta integração**

☐ Save results every TIME STEP

or use SAVEPER =

1

**Delta resultados**

Units for Time

Month

**Unidade de tempo**

NOTE: To change later use Model>Settings or edit the equations for the above parameters.

OK

Cancel